



P.O. Box 65
 No. 4 Executive Circle
 Arkadelphia, AR 71923
 (870) 246-5757
 FAX 1-870-246-3341
 E-mail: arkadelphia@kingwoodforestry.com



Other Kingwood
 Locations:
 P.O. Box 1290
 145 Greenfield Drive
 Monticello, AR 71657
 (870) 367-8567
 FAX 1-870-367-8424

P.O. Box 5887
 4414 Galleria Oaks
 Texarkana, TX 75505
 (903) 831-5200
 FAX 1-903-831-9988



NOTICE OF TIMBER SALE

**Barringer Timberlands, LLC – Clark County, Arkansas
 -Whelen Springs 91 Tract-**

Bid Date: Friday, May 24, 2024 @ 10:00 a. m.

Kingwood Forestry Services, Inc. has been authorized to solicit lump sum bids for the sale of all merchantable timber within clearcut sale area totaling ±85.1 acres, located in Clark County, Arkansas.

Location: Timber to be sold is on land described as:

- **Whelen Springs 91 Tract:** Part of the SW¼, Section 26, Township 10 South, Range 20 West, clearcut timber sale area containing 85.1 acres, more or less, Clark County, Arkansas (Whelen Springs 91 – see attached maps). *West and South boundaries were surveyed and painted white in 2023.*

Timber to be Sold: All merchantable timber within the designated sale areas is to be sold and is FSC Certified through Four State Timberland Owners Association (FSTOA). Timber sale boundaries have been marked with pink Timber Harvest Boundary (THB) flagging and red / white boundary line paint. Streamside Management Zones (SMZ) have been marked with orange SMZ flagging and blue paint. Kingwood Forestry conducted an inventory of merchantable timber with nine (9) cruise lines running east and west in May, 2024. Based on inventory within clearcut sale area, estimated tree counts and timber volumes are as follows:

±85.1 Clearcut Acres – Whelen Springs 91 Tract			
Pine Sawtimber:	3,087 Trees	1,153,800 Board Feet	7,613 Tons
Pine Chip n’ Saw:	137 Trees	6,300 Board Feet	74 Tons
Pine Pulpwood:	537 Trees	---	212 Tons
Pine Topwood:	---	---	599 Tons
Red Oak Sawtimber:	440 Trees	87,400 Board Feet	632 Tons
White Oak Sawtimber:	76 Trees	13,900 Board Feet	99 Tons
Gum & Misc. Sawtimber:	621 Trees	87,700 Board Feet	711 Tons
Hardwood Pulpwood:	3,847 Trees	----	1,367 Tons

Based on our estimates, pine sawtimber to be sold within clearcut sale area averages 20.0” DBH and 374 BF/tree.

Due to variations in cruising methods, utilization standards, and scaling practices, tree counts and volume estimates cannot be guaranteed. Volume report in Tons and Board Feet are attached.

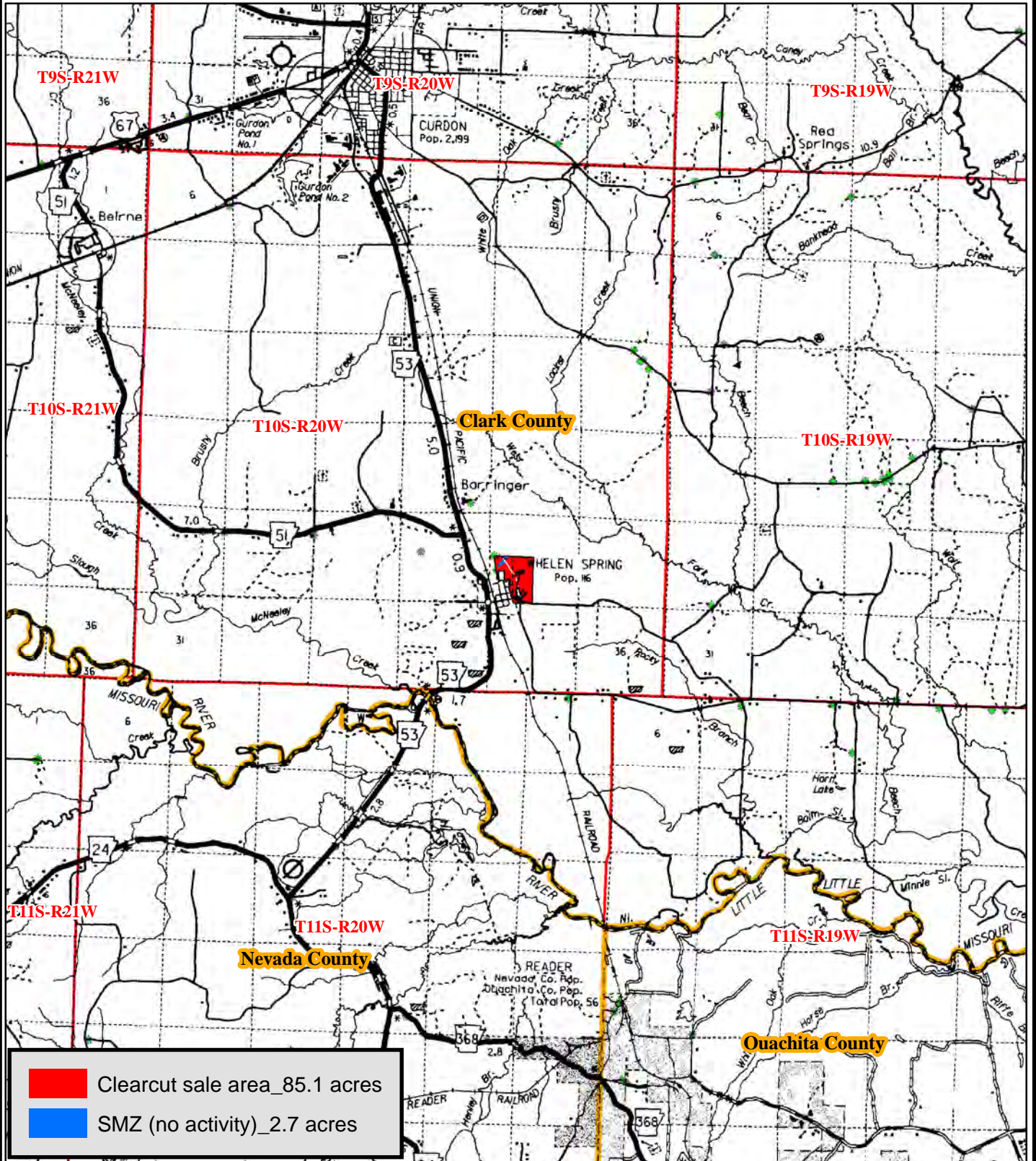
Method of Sale: Timber will be sold on the basis of lump sum sealed bids. A bid form is attached. Bids will be opened at **10:00 a.m., Friday, May 24, 2024**, at the Kingwood Forestry office at #4 Executive Circle, Arkadelphia. Buyers submitting bids are welcome to attend the bid opening. Mailed bids should be addressed to Kingwood Forestry Services, Inc., P.O. Box 65, Arkadelphia, AR 71923, with **“Barringer Timber Sale”** clearly marked in the lower left corner of the envelope. Telephone bids from buyers known to Kingwood will be accepted; however, it is preferred that bids be delivered by fax to 870-246-3341 or by e-mail to arkadelphia@kingwoodforestry.com. Faxed / e-mailed bids will be immediately acknowledged. Please await confirmation that your faxed / email bid has been received. Anyone submitting a bid for the purchase of the timber will be provided with a summary of the bid results.

Conditions of Sale:

1. The landowner reserves the right to accept or reject any bid.
2. A performance deposit of \$1,000.00 is to be paid to Kingwood Forestry Services Escrow and will be held until all work is completed satisfactorily.
3. Conveyance will be by conventional Forest Products Sale Contract providing twenty-four (24) months from date of contract execution to cut and remove the designated timber.
4. Buyer must notify Kingwood Forestry Services, Inc. two (2) days prior to start of harvesting operation.
5. Logging damage must be held to a minimum. Compliance with Best Management Practices for Arkansas will be required.

For more information, contact Jimmy Don Thomas or Phil Wright of Kingwood Forestry Services, Inc. at 870-246-5757 or by e-mail to Arkadelphia@kingwoodforestry.com

**NOTICE OF TIMBER SALE - Harvest All Merchantable Timber
Barringer Timberlands "Whelen Springs 91 Tract"
Pt. SW¼, Sec. 26, T10S, R20W, Clark County, Arkansas
clearcut timber sale area containing 85.1 acres, more or less**



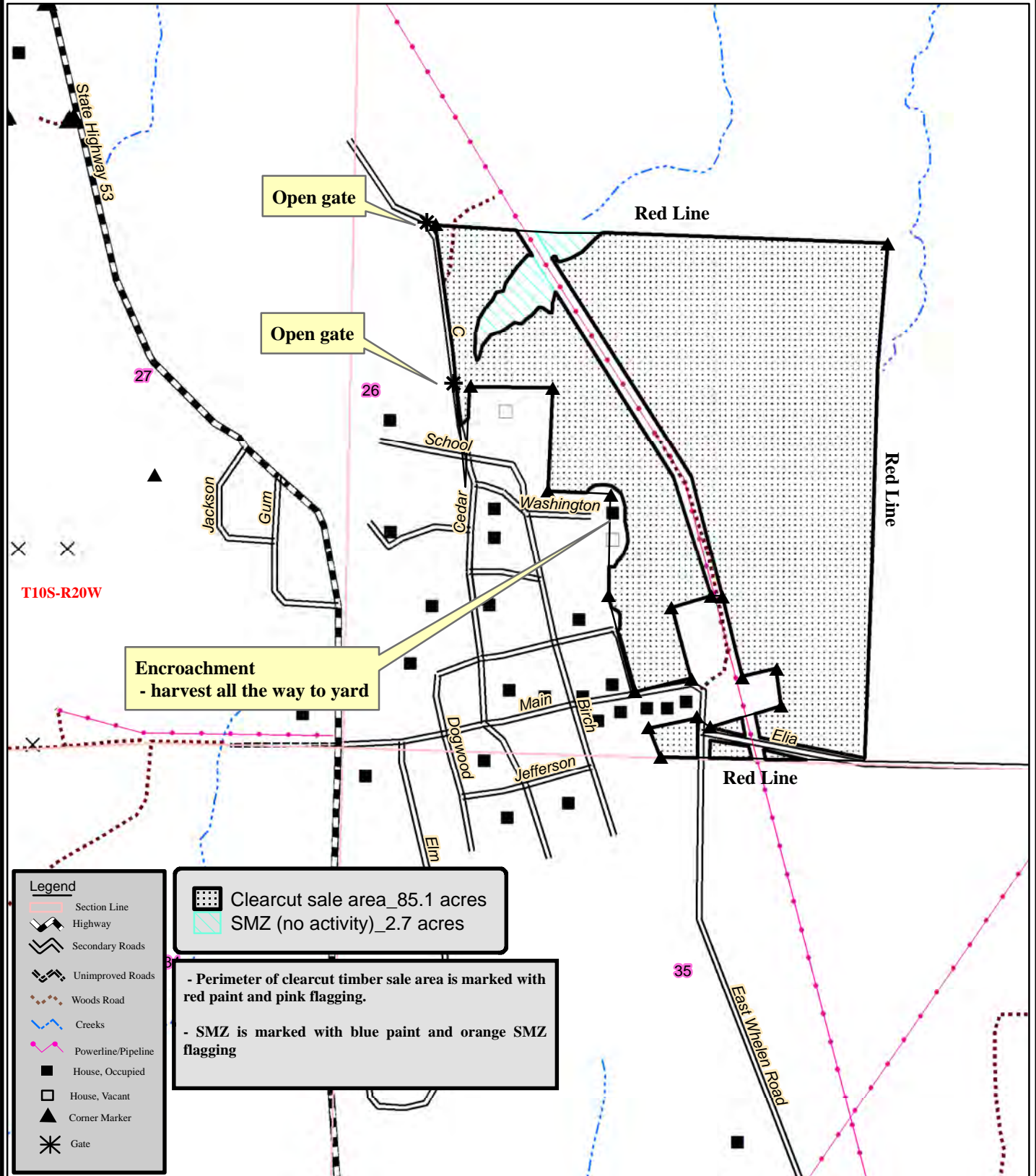
Clearcut sale area_85.1 acres
SMZ (no activity)_2.7 acres



Date: 5/2/2024
Drawn By: JDT



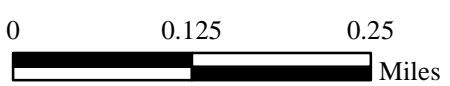
NOTICE OF TIMBER SALE - Harvest All Merchantable Timber
Barringer Timberlands "Whelen Springs 91 Tract"
 Pt. SW¼, Sec. 26, T10S, R20W, Clark County, Arkansas
 clearcut timber sale area containing 85.1 acres, more or less



- Legend**
- Section Line
 - Highway
 - Secondary Roads
 - Unimproved Roads
 - Woods Road
 - Creeks
 - Powerline/Pipeline
 - House, Occupied
 - House, Vacant
 - Corner Marker
 - Gate

Clearcut sale area_85.1 acres
 SMZ (no activity)_2.7 acres

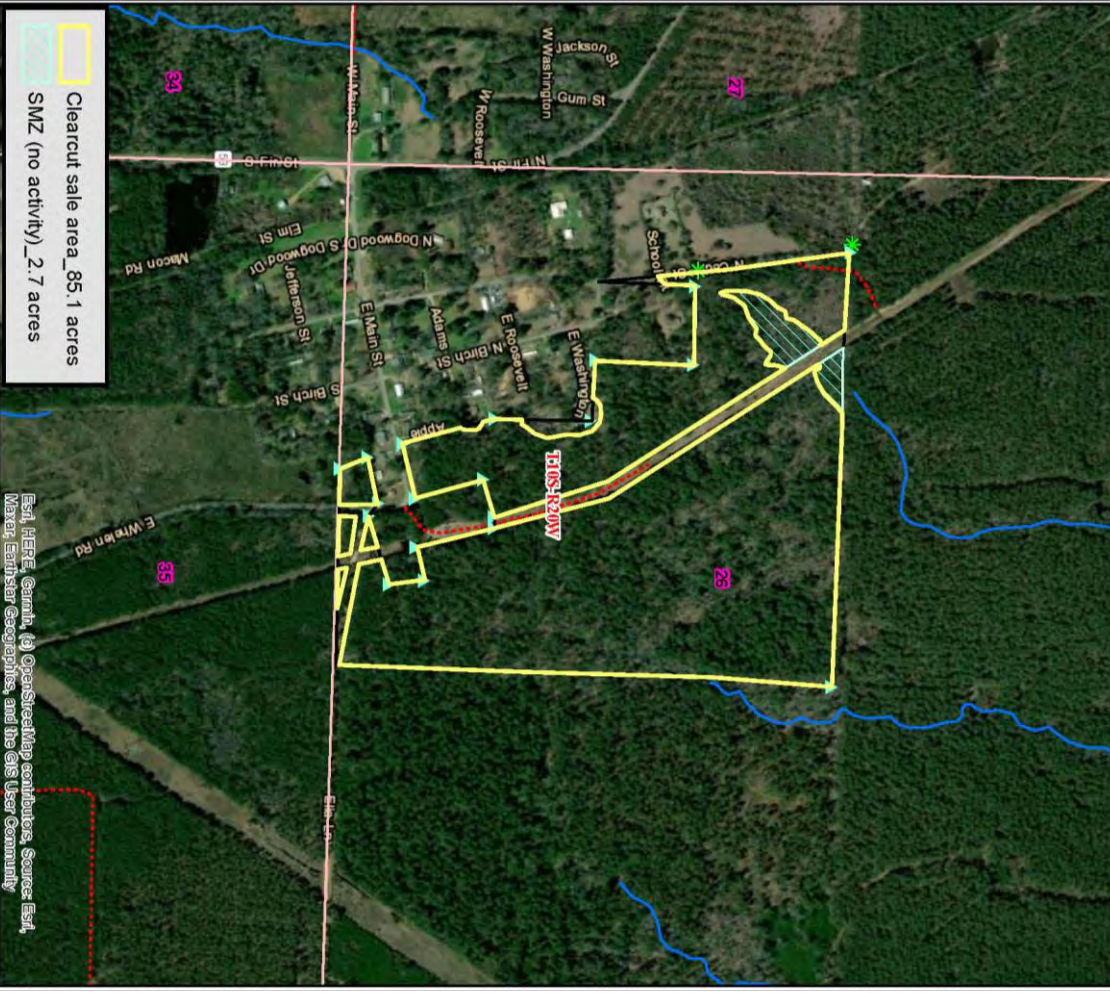
- Perimeter of clearcut timber sale area is marked with red paint and pink flagging.
 - SMZ is marked with blue paint and orange SMZ flagging



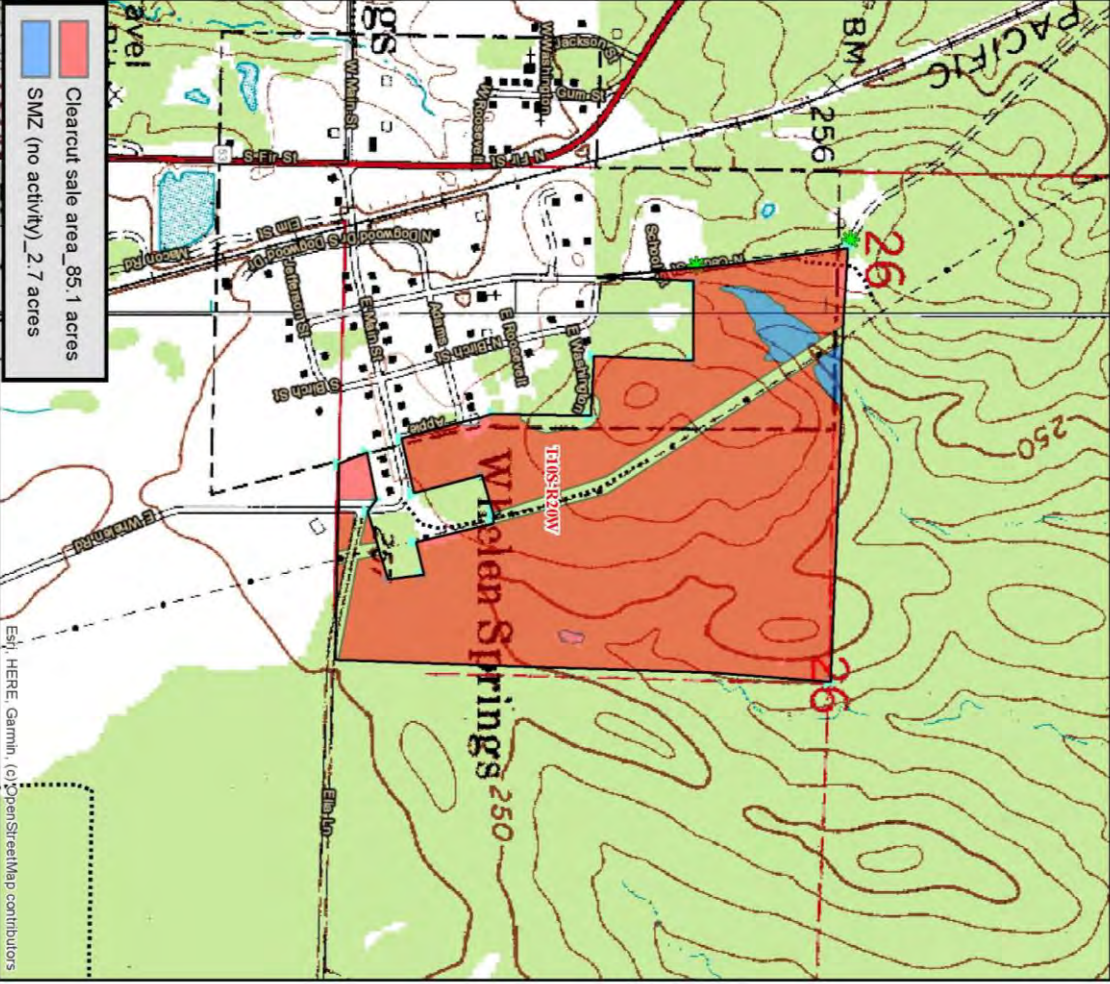
Created: Date: 5/2/2024
 By: JDT



NOTICE OF TIMBER SALE - Harvest All Merchantable Timber
Barringer Timberlands "Whelen Springs 91 Tract"
 Pt. SW 1/4, Sec. 26, T10S, R20W, Clark County, Arkansas
 clearcut timber sale area containing 85.1 acres, more or less



NOTICE OF TIMBER SALE - Harvest All Merchantable Timber
Barringer Timberlands "Whelen Springs 91 Tract"
 Pt. SW 1/4, Sec. 26, T10S, R20W, Clark County, Arkansas
 clearcut timber sale area containing 85.1 acres, more or less



INGWOOD
 BARRINGER TIMBERLANDS, INC.
 Quality. Dependability. And Service.
 Date: 5/2/2024
 Drawn By: JDT

INGWOOD
 BARRINGER TIMBERLANDS, INC.
 Quality. Dependability. And Service.
 Date: 5/2/2024
 Drawn By: JDT

Stand Summary by Group, Product and DBH

Sampling Method:	Plot
BAF / Plot Size:	0.1
# Plots/points:	89
Stand Acres:	85.1
Cruiser:	JDT
Template:	GENERIC

Tract Name:	Whelen Springs 91
Stand ID:	MaturePH
Location:	Clark County AR
Date Cruised:	5/2/2024
Sawlog Vol Units:	Doyle

Site Index Species:	Planted Loblolly
Base Age:	25
Site Index:	0.0
# SI Samples:	0
Avg Age:	0
Avg Ht:	0.0



Pine

	Stand Total					Per Acre					Avg. Tree		Avg. Heights		
	DBH	Trees	PW Tons	Saw Tons	MBF	BA	Trees	PW Tons	Saw Tons	BF	Tons/Tree	BF/Tree	Hs	Hp	Hm
Pulpwood	7	161.0	39.3			0.51	1.9	0.46			0.244			45.9	58.8
	8	82.2	25.6			0.34	1.0	0.30			0.311			46.8	58.0
	9	162.3	68.3			0.84	1.9	0.80			0.421			52.8	64.5
	10	78.9	40.3			0.51	0.9	0.47			0.511			53.4	63.8
	11	21.7	14.4			0.17	0.3	0.17			0.662			59.8	70.5
	13	31.1	23.8			0.34	0.4	0.28			0.766			48.6	55.5
Pulpwood Total		537.2	211.6			2.70	6.3	2.49			0.394			49.9	61.4
Chip-N-Saw	10	35.9	2.6	15.8	1.4	0.23	0.4	0.03	0.19	15.96	0.442	37.887	37.9	54.9	65.5
	11	100.8	6.0	58.5	5.0	0.78	1.2	0.07	0.69	58.60	0.580	49.457	43.4	57.8	68.1
	Chip-N-Saw Total		136.7	8.7	74.4	6.3	1.01	1.6	0.10	0.87	74.57	0.544	46.422	42.0	57.0
Sawtimber	12	171.3	26.3	109.4	9.7	1.58	2.0	0.31	1.29	114.22	0.639	56.758	39.4	61.5	73.3
	13	193.7	29.7	146.6	14.2	2.10	2.3	0.35	1.72	166.65	0.757	73.228	39.2	61.2	71.4
	14	118.6	15.8	118.5	12.3	1.49	1.4	0.19	1.39	144.92	0.999	103.987	47.3	67.2	78.3
	15	164.7	25.9	191.0	21.5	2.37	1.9	0.30	2.24	253.01	1.160	130.747	47.9	69.5	79.9
	16	230.2	33.7	328.3	39.0	3.78	2.7	0.40	3.86	458.71	1.426	169.582	54.1	74.3	85.3
	17	258.2	42.2	424.8	53.8	4.78	3.0	0.50	4.99	631.62	1.646	208.201	56.5	77.2	87.5
	18	219.9	24.4	452.7	59.3	4.57	2.6	0.29	5.32	696.63	2.059	269.565	66.8	84.4	95.3
	19	219.9	38.2	485.0	67.6	5.09	2.6	0.45	5.70	794.52	2.205	307.444	62.8	83.5	93.8
	20	210.4	36.9	519.0	75.0	5.39	2.5	0.43	6.10	880.84	2.467	356.340	64.8	84.5	94.4
	21	181.7	26.8	525.3	78.5	5.13	2.1	0.31	6.17	921.98	2.891	431.877	70.6	89.7	99.4
	22	277.3	43.4	851.5	130.7	8.60	3.3	0.51	10.01	1535.35	3.071	471.193	68.3	86.5	95.7
	23	239.0	45.2	840.1	134.2	8.10	2.8	0.53	9.87	1576.95	3.514	561.394	72.4	92.6	101.9
	24	200.8	37.8	765.5	125.4	7.41	2.4	0.44	9.00	1473.66	3.813	624.550	73.0	92.0	101.0
	25	105.2	18.1	440.8	73.3	4.21	1.2	0.21	5.18	861.69	4.191	697.189	76.3	92.9	101.9
	26	114.7	24.3	501.3	85.9	4.97	1.3	0.29	5.89	1008.92	4.369	748.282	71.7	89.5	98.4
	27	57.4	24.8	260.4	46.8	2.68	0.7	0.29	3.06	549.99	4.538	815.824	64.3	91.5	99.7
	28	47.8	36.9	204.4	38.2	2.40	0.6	0.43	2.40	448.79	4.276	798.841	52.3	86.1	93.5
	29	28.7	18.7	153.3	29.2	1.55	0.3	0.22	1.80	343.52	5.345	1019.110	63.5	97.8	105.8
	30	19.1	12.2	117.3	22.8	1.10	0.2	0.14	1.38	268.40	6.132	1194.370	70.0	104.5	113.0
	31	9.6	17.6	51.8	10.6	0.59	0.1	0.21	0.61	125.10	5.419	1113.394	50.5	106.5	115.5
32	9.6	10.5	61.4	12.5	0.63	0.1	0.12	0.72	147.36	6.421	1311.540	60.5	102.5	110.5	
33	9.6	9.3	64.5	13.2	0.67	0.1	0.11	0.76	155.16	6.741	1380.924	60.5	98.5	105.5	
Sawtimber Total		3,087.2	598.8	7,612.9	1,153.8	79.20	36.3	7.04	89.46	13557.99	2.466	373.736	60.9	81.5	91.4
Group Total		3,761.1	819.1	7,687.3	1,160.1	82.91	44.2	9.62	90.33	13632.56	2.100	308.455	60.1	76.1	86.3

Red Oak

	Stand Total					Per Acre					Avg. Tree		Avg. Heights		
	DBH	Trees	PW Tons	Saw Tons	MBF	BA	Trees	PW Tons	Saw Tons	BF	Tons/Tree	BF/Tree	Hs	Hp	Hm
Large ST	15	47.8	0.0	27.5	2.9	0.69	0.6	0.00	0.32	34.09	0.576	60.686	16.5	16.5	20.5
	16	76.5	0.0	60.4	6.7	1.26	0.9	0.00	0.71	79.10	0.789	87.996	21.5	21.5	24.9
	17	47.8	0.0	44.7	5.3	0.89	0.6	0.00	0.53	62.46	0.935	111.186	22.9	22.9	25.5
	18	38.2	0.0	47.3	5.9	0.79	0.4	0.00	0.56	69.47	1.237	154.562	28.5	28.5	30.5
	19	57.4	0.0	81.5	10.6	1.33	0.7	0.00	0.96	125.07	1.420	185.517	29.8	29.8	33.8
	20	19.1	0.0	28.8	3.9	0.49	0.2	0.00	0.34	45.61	1.504	202.949	28.5	28.5	30.5
	21	19.1	0.0	35.6	5.0	0.54	0.2	0.00	0.42	58.74	1.862	261.379	32.5	32.5	35.5
	22	47.8	0.0	93.6	13.6	1.48	0.6	0.00	1.10	159.69	1.959	284.244	30.9	30.9	34.5
	23	9.6	0.0	25.3	3.8	0.32	0.1	0.00	0.30	44.92	2.648	399.803	40.5	40.5	45.5
	24	9.6	0.0	23.3	3.6	0.35	0.1	0.00	0.27	42.04	2.433	374.194	32.5	32.5	35.5
	25	38.2	0.0	104.7	16.4	1.53	0.4	0.00	1.23	192.91	2.736	429.218	34.5	34.5	38.0
	26	9.6	0.0	16.6	2.6	0.41	0.1	0.00	0.19	30.35	1.731	270.150	16.5	16.5	20.5
	27	9.6	0.0	23.8	3.9	0.45	0.1	0.00	0.28	46.04	2.487	409.762	24.5	24.5	25.5
28	9.6	0.0	19.2	3.1	0.48	0.1	0.00	0.23	36.44	2.008	324.297	16.5	16.5	20.5	
Large ST Total		439.8	0.0	632.2	87.4	11.02	5.2	0.00	7.43	1026.92	1.437	198.688	26.2	26.2	29.5
Group Total		439.8	0.0	632.2	87.4	11.02	5.2	0.00	7.43	1026.92	1.437	198.688	26.2	26.2	29.5

White Oak

	Stand Total					Per Acre					Avg. Tree		Avg. Heights		
	DBH	Trees	PW Tons	Saw Tons	MBF	BA	Trees	PW Tons	Saw Tons	BF	Tons/Tree	BF/Tree	Hs	Hp	Hm
Large ST	16	19.1	0.0	12.5	1.4	0.31	0.2	0.00	0.15	16.53	0.656	73.550	16.5	16.5	20.5
	17	9.6	0.0	9.4	1.1	0.18	0.1	0.00	0.11	13.38	0.987	119.104	24.5	24.5	25.5
	18	9.6	0.0	7.9	1.0	0.20	0.1	0.00	0.09	11.57	0.830	102.985	16.5	16.5	20.5
	22	19.1	0.0	31.6	4.6	0.59	0.2	0.00	0.37	54.53	1.652	242.664	24.5	24.5	25.5
	24	19.1	0.0	37.4	5.7	0.71	0.2	0.00	0.44	66.87	1.954	297.569	24.5	24.5	28.0
Large ST Total		76.5	0.0	98.9	13.9	1.99	0.9	0.00	1.16	162.88	1.292	181.207	21.5	21.5	24.3
Group Total		76.5	0.0	98.9	13.9	1.99	0.9	0.00	1.16	162.88	1.292	181.207	21.5	21.5	24.3

Sweetgum

	Stand Total					Per Acre					Avg. Tree		Avg. Heights		
	DBH	Trees	PW Tons	Saw Tons	MBF	BA	Trees	PW Tons	Saw Tons	BF	Tons/Tree	BF/Tree	Hs	Hp	Hm
Large ST	15	66.9	0.0	51.3	5.4	0.97	0.8	0.00	0.60	63.65	0.767	80.923	24.5	24.5	26.2
	16	76.5	0.0	70.5	7.9	1.26	0.9	0.00	0.83	92.34	0.921	102.731	26.5	26.5	29.3
	17	28.7	0.0	32.8	3.9	0.53	0.3	0.00	0.38	45.39	1.142	134.649	29.8	29.8	32.2
	18	76.5	0.0	109.3	13.5	1.59	0.9	0.00	1.28	159.03	1.428	176.922	34.5	34.5	38.0
	19	66.9	0.0	117.7	15.2	1.55	0.8	0.00	1.38	178.40	1.758	226.822	39.4	39.4	43.4
	20	28.7	0.0	53.9	7.2	0.74	0.3	0.00	0.63	85.06	1.878	252.330	37.8	37.8	40.5
	21	9.6	0.0	17.8	2.5	0.27	0.1	0.00	0.21	29.37	1.862	261.379	32.5	32.5	35.5
	23	9.6	0.0	17.3	2.6	0.32	0.1	0.00	0.20	30.63	1.805	272.601	24.5	24.5	25.5
Large ST Total		363.3	0.0	470.5	58.2	7.22	4.3	0.00	5.53	683.86	1.295	160.167	31.4	31.4	34.3
Group Total		363.3	0.0	470.5	58.2	7.22	4.3	0.00	5.53	683.86	1.295	160.167	31.4	31.4	34.3

Misc. Hardwood

	Stand Total					Per Acre					Avg. Tree		Avg. Heights		
	DBH	Trees	PW Tons	Saw Tons	MBF	BA	Trees	PW Tons	Saw Tons	BF	Tons/Tree	BF/Tree	Hs	Hp	Hm
Pulpwood	5	105.2	9.1			0.17	1.2	0.11			0.086			24.5	25.5
	6	657.4	74.4			1.52	7.7	0.87			0.113			21.8	23.8
	7	483.0	79.2			1.52	5.7	0.93			0.164			23.6	27.7
	8	657.4	146.4			2.70	7.7	1.72			0.223			25.0	28.3
	9	357.1	107.5			1.85	4.2	1.26			0.301			27.4	31.0
	10	578.5	228.3			3.71	6.8	2.68			0.395			30.0	33.2
	11	195.6	93.5			1.52	2.3	1.10			0.478			29.8	32.7
	12	200.9	124.8			1.85	2.4	1.47			0.621			34.0	36.9
	13	295.6	234.7			3.20	3.5	2.76			0.794			38.0	41.0
	14	228.1	183.1			2.87	2.7	2.15			0.803			31.6	35.2
	15	70.1	62.3			1.01	0.8	0.73			0.888			29.8	33.8
	16	10.3	13.0			0.17	0.1	0.15			1.264			40.5	40.5
	18	8.1	11.1			0.17	0.1	0.13			1.368			32.5	35.5
Pulpwood Total		3,847.4	1,367.4			22.25	45.2	16.07			0.355			27.5	30.6
Large ST	15	47.8	0.0	31.2	3.3	0.69	0.6	0.00	0.37	38.85	0.653	69.160	19.7	19.7	22.5
	16	76.5	0.0	66.0	7.3	1.26	0.9	0.00	0.78	86.26	0.862	95.962	24.5	24.5	26.8
	17	28.7	0.0	21.2	2.5	0.53	0.3	0.00	0.25	29.54	0.740	87.650	16.5	16.5	20.5
	18	57.4	0.0	55.4	6.9	1.19	0.7	0.00	0.65	81.02	0.965	120.177	20.5	20.5	23.8
	19	9.6	0.0	14.6	1.9	0.22	0.1	0.00	0.17	22.18	1.524	197.406	32.5	32.5	35.5
	21	19.1	0.0	25.2	3.6	0.54	0.2	0.00	0.30	41.76	1.319	185.831	20.5	20.5	25.5
	22	19.1	0.0	27.6	4.0	0.59	0.2	0.00	0.32	47.12	1.446	209.674	20.5	20.5	23.0
Large ST Total		258.2	0.0	241.2	29.5	5.02	3.0	0.00	2.83	346.73	0.934	114.293	21.5	21.5	24.6
Group Total		4,105.6	1,367.4	241.2	29.5	27.27	48.2	16.07	2.83	346.73	0.392	7.187	21.5	27.1	30.2

TIMBER SALE BID FORM

Barringer Timberlands, LLC – Clark County, Arkansas

-Whelen Springs 91 Tract-

Bid Date: Friday, May 24, 2024 @ 10:00 a. m.

Send Completed Offer Forms to us:

Mail: P.O. Box 65, Arkadelphia, AR 71923

Fax: 870-246-3341

Hand Deliver: #4 Executive Circle, Arkadelphia, AR 71923

E-mail: arkadelphia@kingwoodforestry.com

I submit the following as an offer for the purchase of all merchantable timber within designated clearcut sale area, on the Whelen Springs 91 Tract further described as Part of the SW¹/₄, Section 26, Township 10 South, Range 20 West, clearcut timber sale area containing 85.1 acres, more or less, Clark County, Arkansas (Whelen Springs 91 – see attached maps). *West and South boundaries were surveyed and painted white in 2023.* My offer will remain valid through 10:00 a.m. Monday, May 27, 2024. Successful bidder will be notified at or before that time by telephone, fax, or e-mail. If my offer is accepted, I am ready, willing, and able to execute a Forest Products Sale Contract with payment in full due at time of contract execution.

Send offer form to: Kingwood Forestry Services, Inc. (**Before 10:00 a.m., Friday, May 24, 2024**)
P.O. Box 65, Arkadelphia, AR 71923 or fax to 870-246-3341 or
E-mail completed Bid Form to Arkadelphia@kingwoodforestry.com

Whelen Springs 91 Tract Timber Bid: \$ _____
(All merchantable timber within designated sale areas.)

Date: _____ Fax #: _____

Company: _____
Printed Phone #: _____

Bidder: _____ Bidder: _____
Printed Signed

Address: _____
Street City, State, Zip

Email: _____

